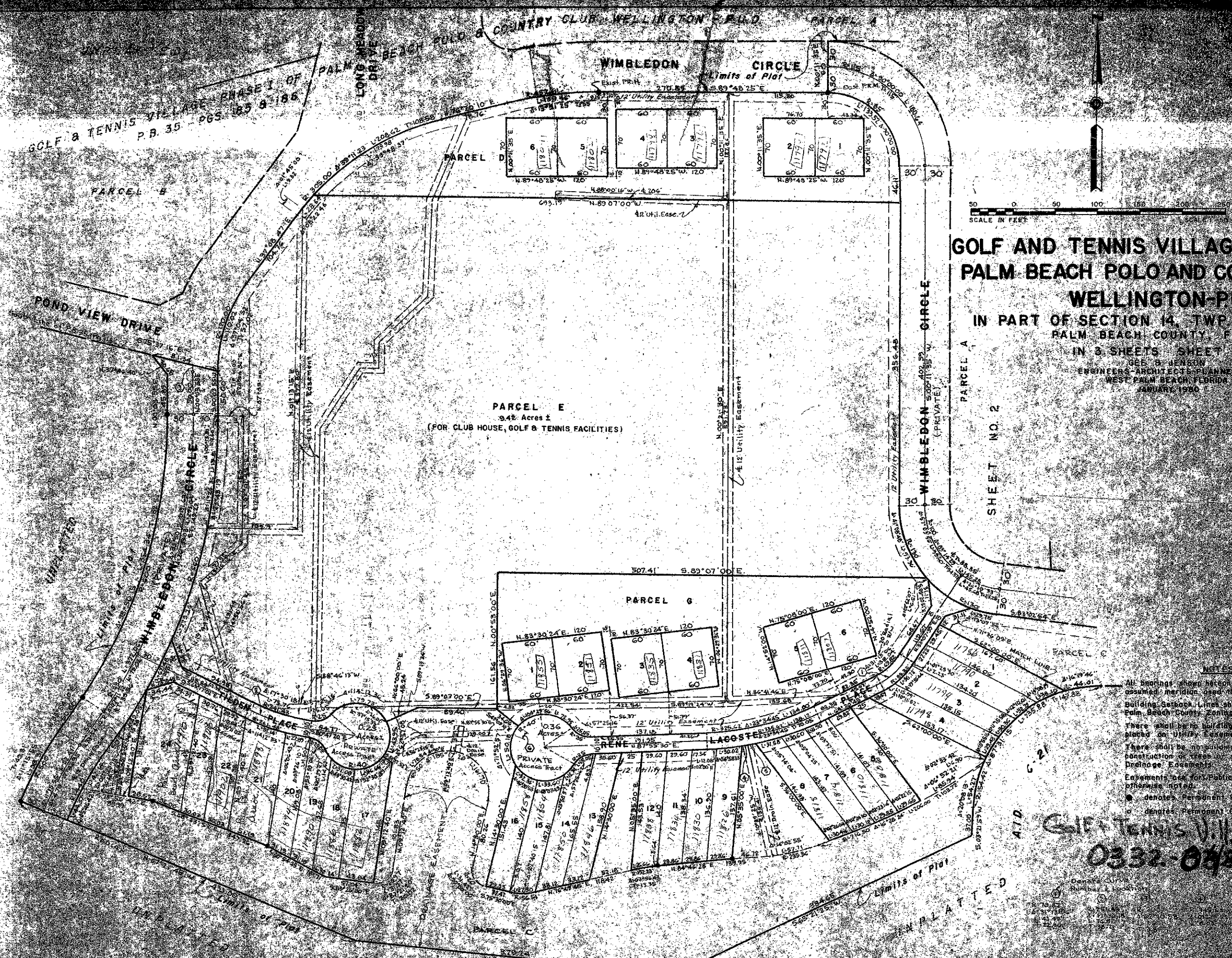


41-152

132



STATE OF FLORIDA  
 COUNTY OF PALM BEACH  
 This Plan was filed for record on  
 this 17th day of 1990  
 and duly recorded in Plat Book No.  
 04 page  
 JOHN B. DUNKLE, Clerk, Circuit Court  
 D.C.

**GOLF AND TENNIS VILLAGE-PHASE 2A OF  
 PALM BEACH POLO AND COUNTRY CLUB  
 WELLINGTON-PUD**  
 IN PART OF SECTION 14, TWP. 44S., R6E. 41E  
 PALM BEACH COUNTY, FLORIDA  
 IN 3 SHEETS SHEET NO. 2  
 GEE & JENSEN  
 ENGINEERS-ARCHITECTS-PLANNERS  
 WEST PALM BEACH, FLORIDA  
 JANUARY, 1990

**NOTES**  
 All bearings shown herein are related to an assumed meridian used throughout Wellington.  
 Building Setback Lines shall be as required by Palm Beach County Zoning Regulations.  
 There shall be no building or other structures placed on Utility Easements.  
 There shall be no building or any kind of construction or trees or shrubs placed on Drainage Easements.  
 Easements for Public Utilities, unless otherwise noted.  
 ● denotes Permanent Reference Monument  
 ○ denotes Permanent Control Point

GOLF & TENNIS VILL. PBCCL-Well  
 0332-048  
 4/132